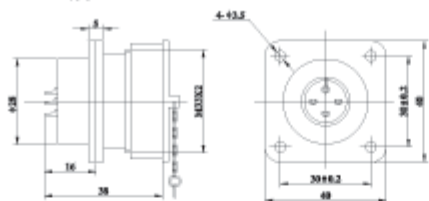
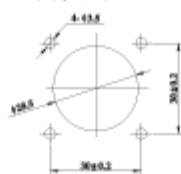


## ❖ YD28型尺寸图:

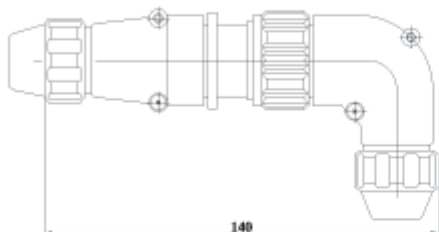
### ● 插座JZ



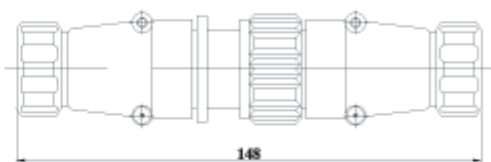
### ● 安装开孔



### ● 弯式: 对接电缆式 头TR(S) 座ZP(Q)/(套)

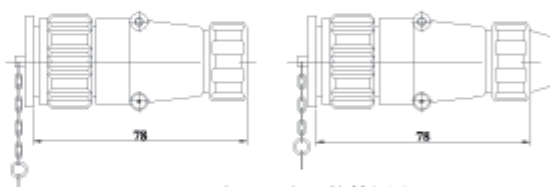


### ● 直式: 对接电缆式 头TP(Q) 座ZP(Q)/(套)

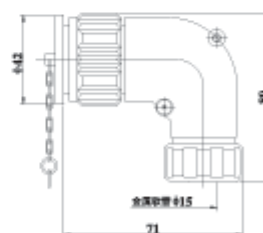


### ● 直式: 金属软管插头TP

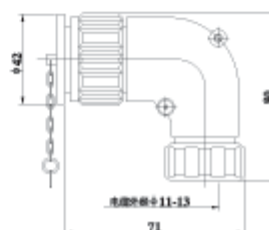
### ● 直式: 电缆插头TQ



### ● 弯式: 金属软管插头TR



### ● 弯式: 电缆插头TS



芯数	4芯	7芯	10芯
排列图			
额定电流A	25	25	10
接触对直径、数量	φ2.5*4	φ2.5*7	φ1.5*10
工作电压 (AC.V.rms)	500	500	500
耐压 (AC.V) 1min	1500	1500	1500
接触电阻mΩ	<1mΩ	<1mΩ	<3mΩ
绝缘电阻MΩ	>500MΩ	>500MΩ	>500MΩ