



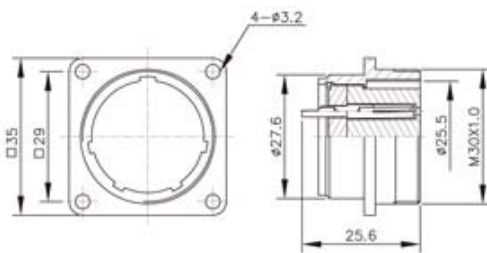
OUTPUT TYPE

# PLS Series - Output Type

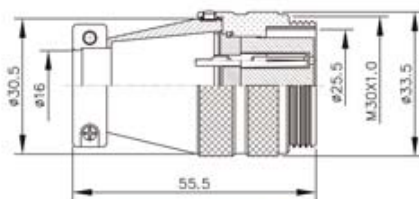


SINCE 1978  
APEX CONNECTOR

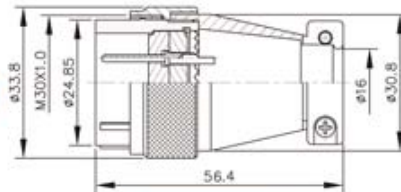
**大豪电子**  
电话:0775-83233025  
<http://www.szdahao.com>  
<http://www.very-tec.com>



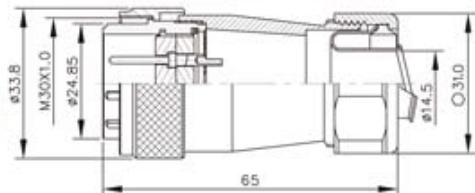
PLS-28-RF



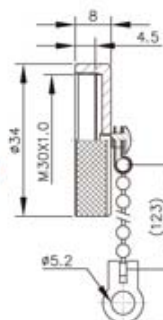
PLS-28-ADF



PLS-28-PM

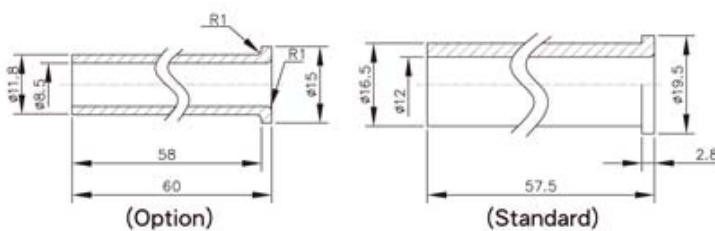


PLS-28-GPM1/2

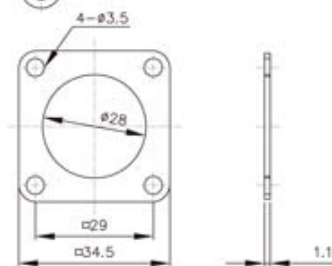


PLS-28-RCa

ACCESSORY:



RUBBER TUBE FOR PLS-28-PM



RUBBER PLATE FOR PLS-28-RF

◆ No. of contacts	12	16	17	20	26
Contacts Configuration					
Rated current / voltage	10A 250V	10A 250V	10A 250V	5A 250V	5A 250V
Operation limit voltage (AC.V.rms)	250	250	250	250	250
Withstanding voltage (AC.V.rms) 1 minute	1000	1000	1000	1000	1000
Insulation resistance (MΩ MIN.) at DC 500V	1000	1000	1000	1000	1000
Contact resistance (MΩ MAX.) at DC 1A	5	5	5	3	3
Solder inter diameter	1.6	1.6	1.6	1.2	1.2